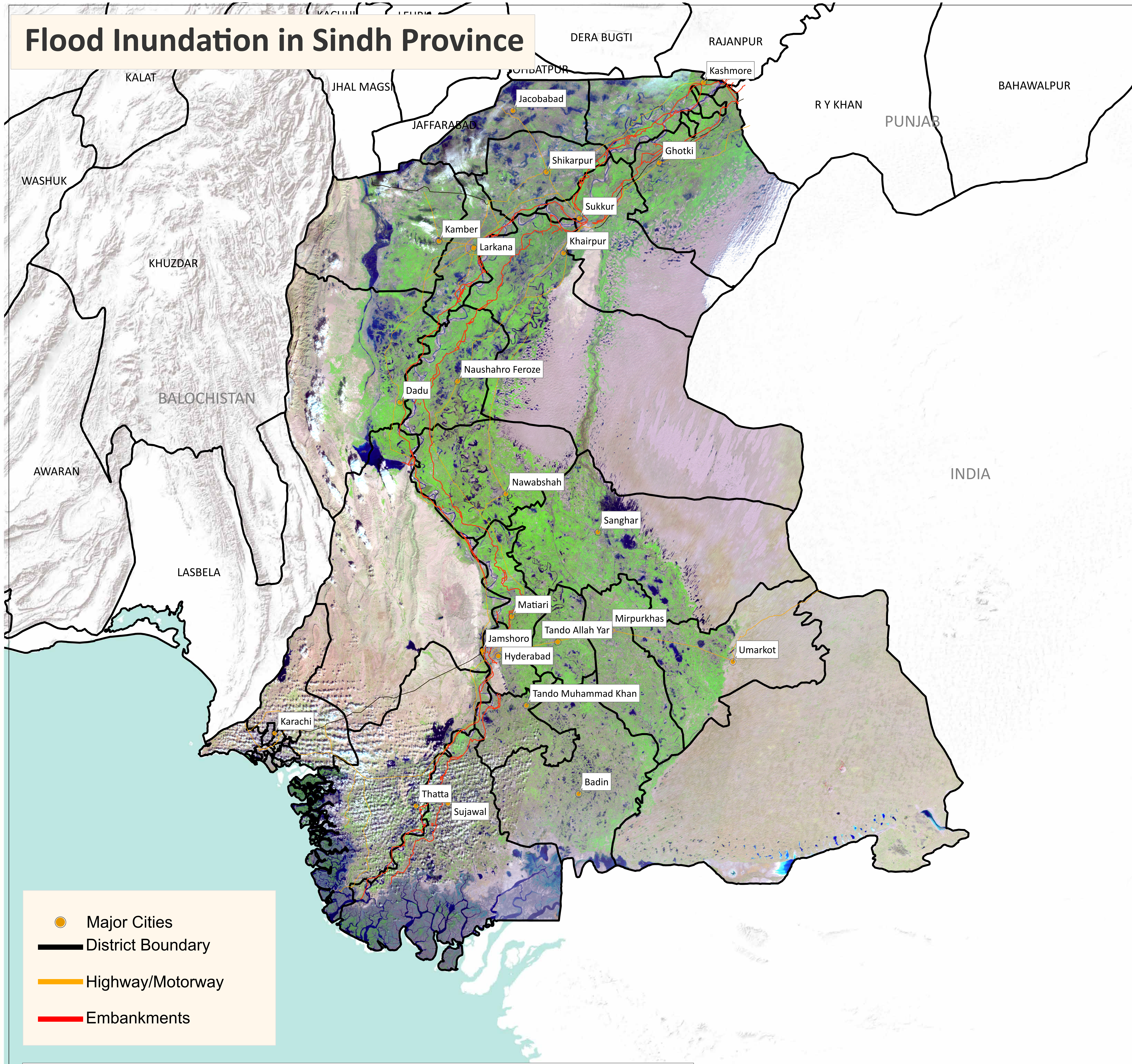
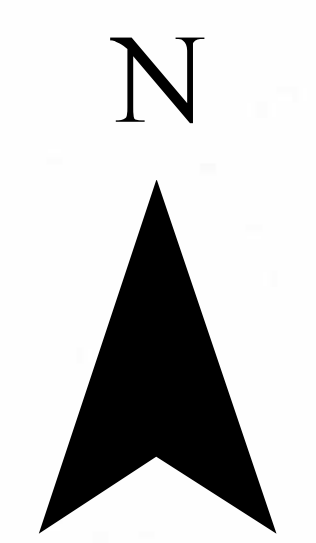


Flood Inundation in Sindh Province



- Major Cities
- District Boundary
- Highway/Motorway
- Embankments

S.no	District	Total Area in Sq.Km	Water Bodies in Sq.Km	Previous Inundation in Sq.Km (18/12/2023)	Current Inundation in Sq.Km (12/01/2023)
1	Kashmore	2,549.03	298.81	330.8	321.67
2	Jacobabad	2,769.36	75.45	519.18	469.07
3	Shikarpur	2,576.89	113.86	338.36	263.86
4	Larkana	1,906.34	112.79	179.2	142.23
5	Kamber Shadadkot	5,596.44	35.21	532.56	455.85
6	Dadu	8,032	142.88	789.7	575.65
7	Naushahro Feroze	3,025.48	140.23	350.08	298.94
8	SBA	4,615.16	144.36	322.76	272.27
9	Sanghar	10,259.02	215.41	603.78	573.23
10	Jamshoro	11,250.32	258.81	320.44	312.29
11	Hyderabad	1,021.54	27.87	56.86	53.22
12	Matiari	1,458.04	52.82	92.47	66.93
13	Tando Allah Yar	1,572.86	9.40	77.27	60.29
14	TMK	1,813	55.36	89.32	86.92
15	Badin	6,470	249.81	358.24	305.69
16	Sujawal	8,699.20	1,052.73	1763.92	1,387.95
17	Thatta	7,704	854.57	872.55	1,068.73
18	Sukkur	5,212.05	160.98	189.02	157.34
19	Khairpur	15,925.04	172.85	549.17	488.91
20	Ghotki	6,506.18	124.16	211.06	205.62
21	Mirpurkhas	3,319.16	16.91	72.4	68.11
22	Umerkot	5,502.92	2.32	69.38	121.44
Total		117,784.49	4,317.59	8,688.52	7,756.21

Disclaimer: 15m resolution satellite Images has been used for preliminary damage assessment and depicts status of flood inundation as of image acquisition date. Due to presence of clouds over some parts of Sindh inundation may be affected.

Source: Landsat 9 Collection 2, 12 January 2023 5: 51 GMT

